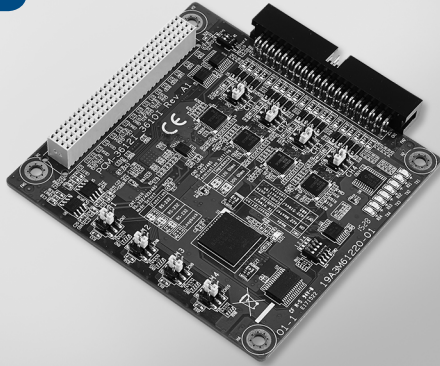


PCM-3612I

4-port RS-232/422/485 PCI-104 Module

NEW



Features

- Automatic RS-485 data flow control
- LED indicators: TX, RX
- Standard PC ports: COM1, COM2, COM3, COM4 compatible
- Supports Windows 7/8/10
- Supports WinCE 5.0/6.0
- Powerful and easy-to-use utility (ICOM Tools)

Specifications

General

- **Card Interface** PCI-104
- **Connectors** 1 x 40-pin header
- **Ports** 4
- **Power requirements:** +3.3V @ 260 mA (Typical) +3.3V @ 530 mA(Max.)

Communications

- **Data Bits** 5, 6, 7, 8
- **Signals:**
RS-232:TxD,RxD,RTS,CTS,DTR,DSR,DCD,RI and GND
RS-422:TxD+,TxD-,RxD+,RxD-,GND,CTS+,CTS-,RTS+ and RTS-
RS-485:Data+, Data- and GND
- **Parity** None, Even, or Odd
- **Speed** 50 bps ~ 921.6 kbps
- **Stop Bits** 1, 1.5, 2
- **Termination Resistor** 120 Ω & 300 Ω

Environment

- **Operating Humidity** 0 ~ 90 % RH
- **Operating Temperature** -40 ~ 85°C (-40 ~ 185°F)
- **Storage Temperature** -40 ~ 85°C (-40 ~ 185°F)

Ordering Information

- **PCM-3612I-AE** 4-port RS-232/422/485 PCI-104 Module